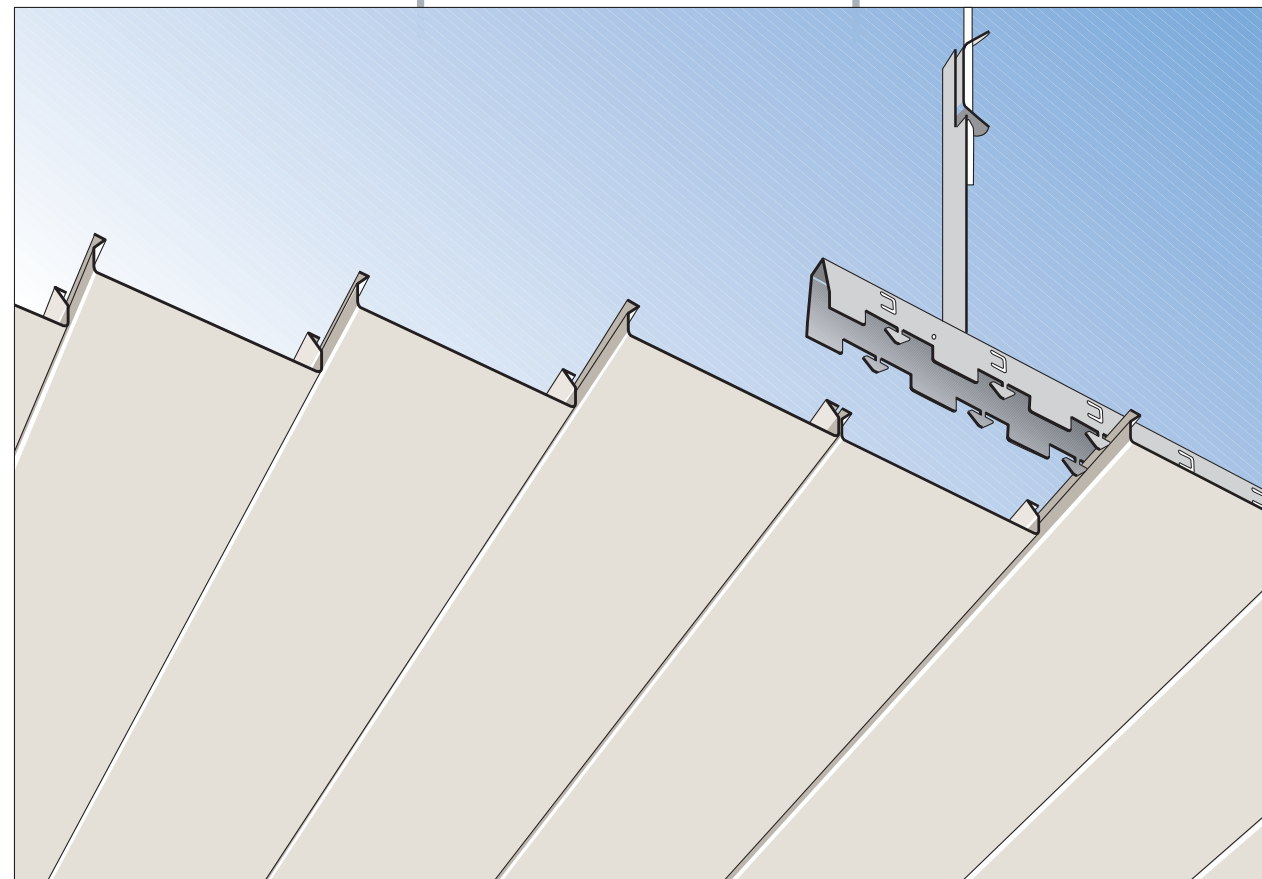




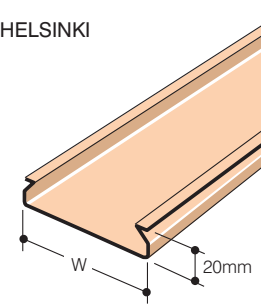
ShanghaiProfil

Helsinki

LINEAR METAL STRIP CEILING
(Butt joint system)



1 HELSINKI



Cold roll formed aluminium in thicknesses shown in Table 1. Perforated profiles to have black tissue lining bonded to rear of profile.

Standard finish: colour white similar RAL 9010.

Special finishes: subject to minimum order quantity. Matt or full gloss finishes are available subject to colour specification.

Standard length: to order between 1000mm min. and 5800mm max.

Insulation pad: see item (4).

Table 1: Profile widths and metal thicknesses.

Legend:

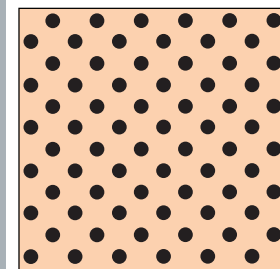
W = profile width mm

H = profile height mm

Al = aluminium thickness mm

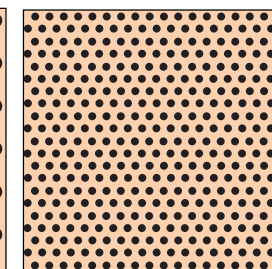
St = steel thickness mm

Ref.	W	H	Al
KF 75H20	75	20	0.5
KF 125 H20	125	20	0.6
KF 175H20	175	20	0.6



STANDARD PERFORATION (zonal)

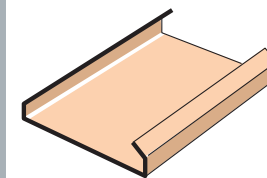
2mm diameter holes on diagonal grid. 16.9% open area.



MICROPERFORATION (zonal)

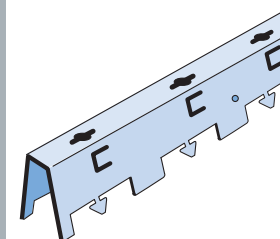
1.3mm diameter holes on diagonal grid. 22% open area.

1A



Splice channels for HELSINKI profiles, 150mm long, metal as profiles.

2



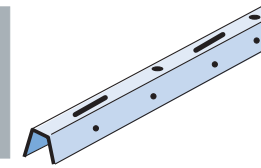
PPU carriers in cold roll formed 0.6mm thick galvanised mild steel or 0.8mm thick aluminium.

Standard finish: matt black polyester stove enamel paint.

Standard lengths: 3600mm.

Overall size: 39mm deep x 25mm wide.

2A



Channel coupler for PPU carriers in 0.6mm thick galvanised mild steel. Length=200mm. Finish as carrier.

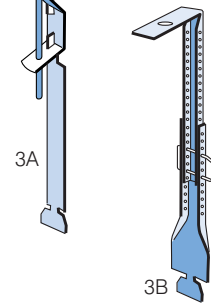
3A



Butterfly suspension key hangers in 1.5mm thick galvanised mild steel, with spring clips and 4mm dia. rod.

Standard length: various between 125mm min. and 1000mm max. ceiling void depths.

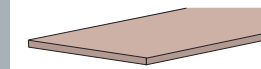
3B



Vernier hanger upper section in 1.0mm thick galvanised mild steel, paint finished, with 1.25mm thick galvanised mild steel bracket and 2.5mm dia. steel looped security pin.

Standard length: 2000mm upper section VERNIER hanger has section edges vee notched to provide 'easy break' positions at 62mm centres.

4

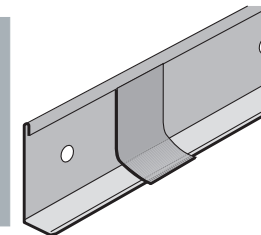


Perforated panels to have black tissue lining bonded to rear of panel.

Insulation pads fitted in panel on site when specified.

Standard 30mm thick 55kg/m³ with black tissue face.

5

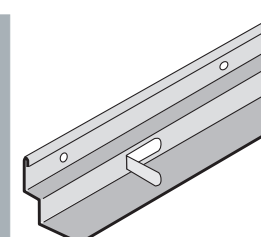


Perimeter angle trim in cold roll formed 0.6mm thick galvanised mild steel.

Standard finish: white or black semi gloss stove enamel polyester paint.

Standard length: 4000mm. **Overall size:** 40mm deep x 20mm wide.

6



Perimeter shadow line angle trim in metal, finish and lengths as (5).

Overall size: 44mm deep x 36.5mm wide. Shadow gap width = 12.5mm.

ShanghaiProfil Metal Ceiling Co., Ltd.
No. 30, Lane 1125, Nanliu Road,
Pudong New Area, 201300 Shanghai
P.R. China

Tel: (+86)-21-5803 3985
E-mail: info@shanghaiprofil.com
Fax: (+86)-21-5803 3990
Internet: www.shanghaiprofil.com

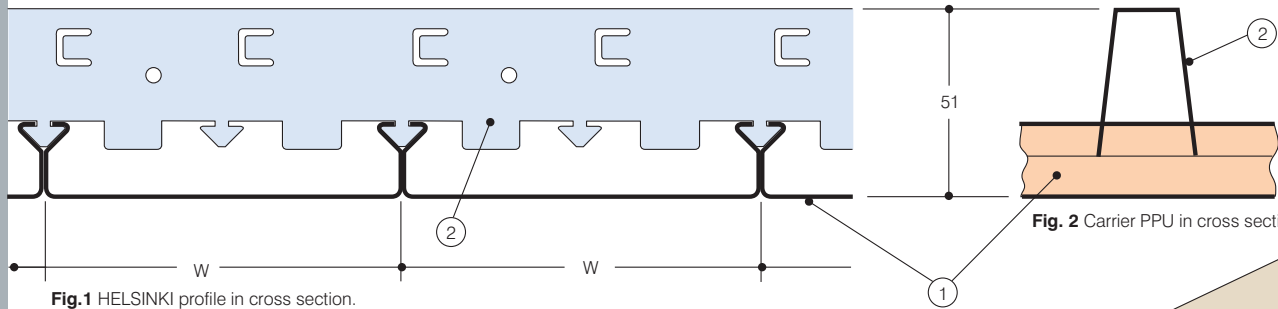


Fig. 1 HELSINKI profile in cross section.

Suspended from the structural soffit by adjustable hangers (3A) (Fig. 4) or (3B) (see rear page), carriers PPU (2) (Figs. 1, 2, 4), contain cutout features within which HELSINKI profiles (1) (Fig. 1) are sprung to make a secure attachment. The profiles can be removed using a chisel or screwdriver inserted between the joints to gently prise loose the sprung fixture.

Either of the perimeter angles (5) (Fig. 4) or (6) (Fig. 3) can be used to cloak the

cut edges of HELSINKI profiles at walls and other abutments. The edges are held down by clips on angle (5) and by pull out tabs on angle (6).

Fig. 2 Carrier PPU in cross section.

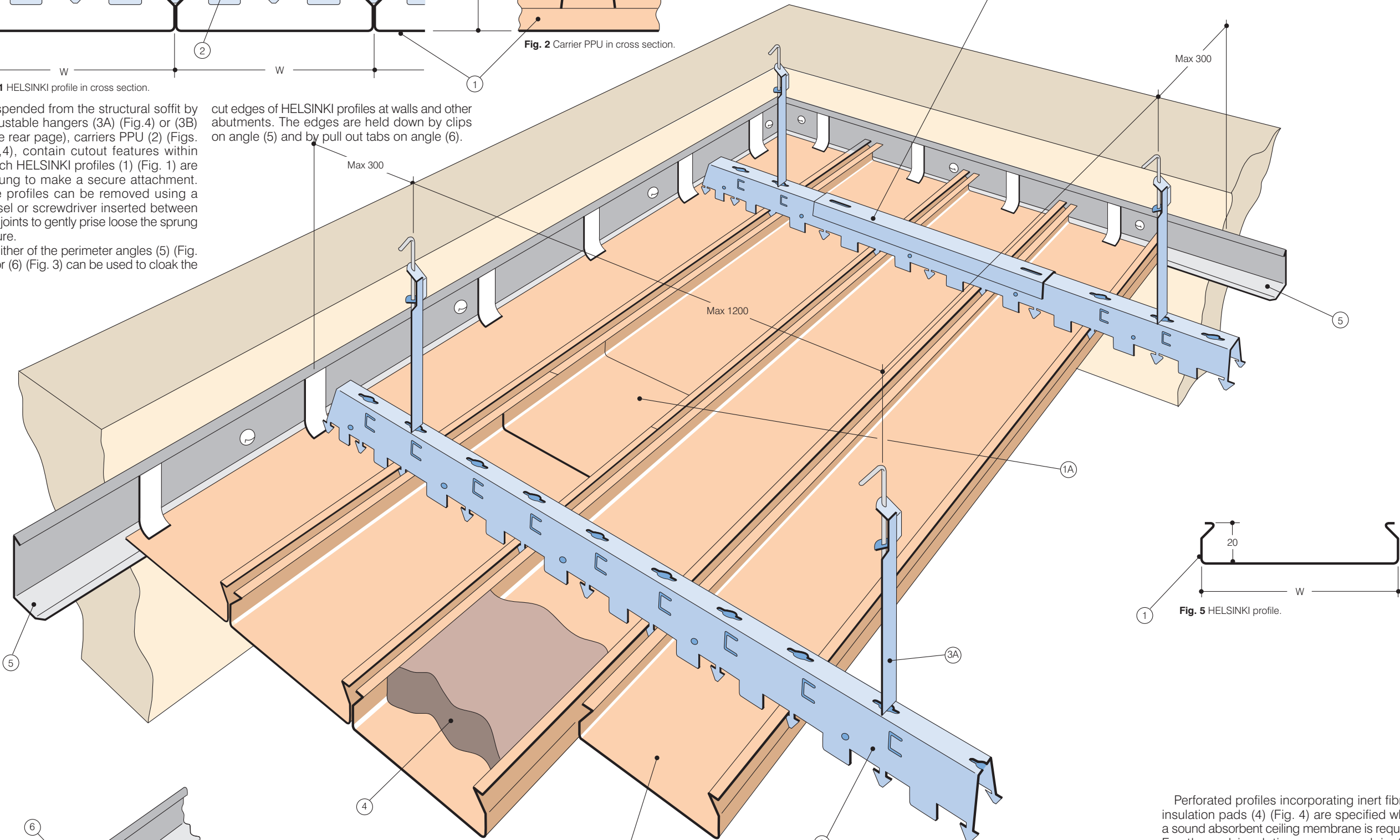
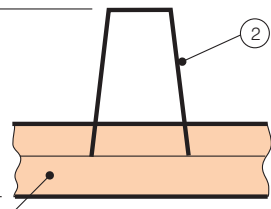


Fig. 4 HELSINKI ceiling assembly with span data.

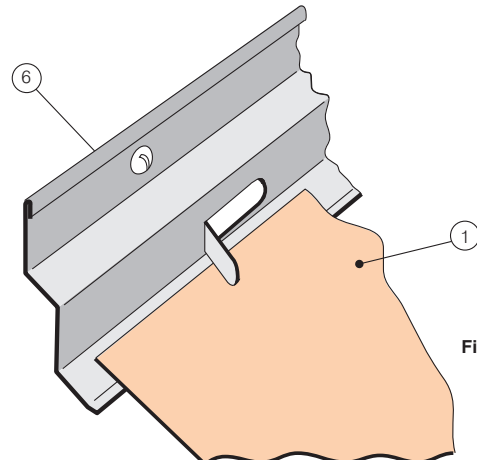


Fig. 3 Perimeter angle with hold down tabs.

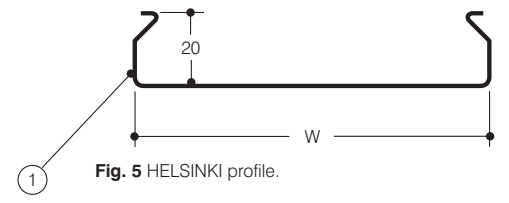


Fig. 5 HELSINKI profile.

Manufactured from light gauge aluminium or mild steel strip, HELSINKI round edge profiles (1) (Figs. 5 & 6) are fixed as shown to create demountable interior ceilings.

Profiles are supplied in plain (non perforated) metals or in the perforated forms shown on the rear page.

Available in standard stove enamel white finishes they can also be supplied in special finishes subject to minimum order quantity.

Perforated profiles incorporating inert fibrous insulation pads (4) (Fig. 4) are specified where a sound absorbent ceiling membrane is required. For thermal insulation purposes plain (non perforated) profiles with pads can be used. HELSINKI linear ceilings can function as an air distributing system if air is allowed to flow from a pressurised ceiling plenum through holes in the profiles. Sealed insulation pads (4) must be used in the non active profiles.

